

RadCalc version 6.3 is equipped with many new features to help you and your patients safely win the race against cancer. The following is just a few of the advanced features:

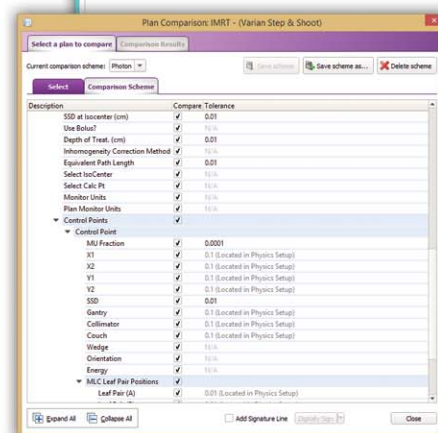
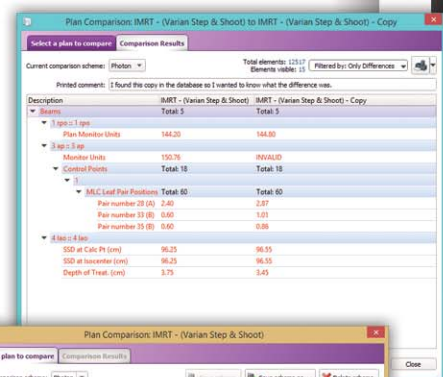
The FIRST to provide 3D Dose Volume Verification for Brachytherapy Calculations



Please refer to the Brachytherapy calculation leaflet for more detailed information.

Newly improved Plan Comparison tool

- It is now possible to specify which items are compared during a comparison.
- The tolerance of many non-machine specific items can now be set.
- The items chosen for plan comparison and their respective tolerances can now be saved in calculation specific comparison schemes.
- Comparison schemes can be easily applied to any calculation of the same type.
- A *Differences* plan comparison report may be generated showing only comparison differences. A summary of passes will also be indicated on the *Differences* report.
- An *All Results* plan comparison report may be generated showing all passes and differences.
- A comment may be added to plan comparison reports. Reports may be digitally signed and printed, saved to PDF file, or e-mailed.



Automated Database Maintenance

- Flexible archiving schedule ranging from daily to yearly.
- All patients or patients which have not been accessed for a time may be archived and optionally removed.
- Physics data may be automatically archived on a regular basis or only when a change occurs.
- Searchable reports may be automatically generated to accompany archive files.

Plus hundreds of other features and improvements added!

New fluence and dose map image analysis

- Percent Difference
- Distance to Agreement (DTA) - For each point in reference map, finely resamples comparison map to find closest point with value within a user-defined percentage of the reference value.
- Gamma Analysis - For each point in reference map, calculates the gamma value between the reference and comparison map.

Pre-Treatment: Compare any of the following computed or imported files:

- RadCalc® Dose • Pinnacle Dose • DICOM Dose • Pinnacle ODM
- RadCalc® Fluence • Imported Fluence • MapCHECK® • IBA MatriXX

Post-Treatment: Compare any of the following computed or imported files:

- RadCalc® Fluence • Imported Fluence
- DynaLog or TrajectoryLog

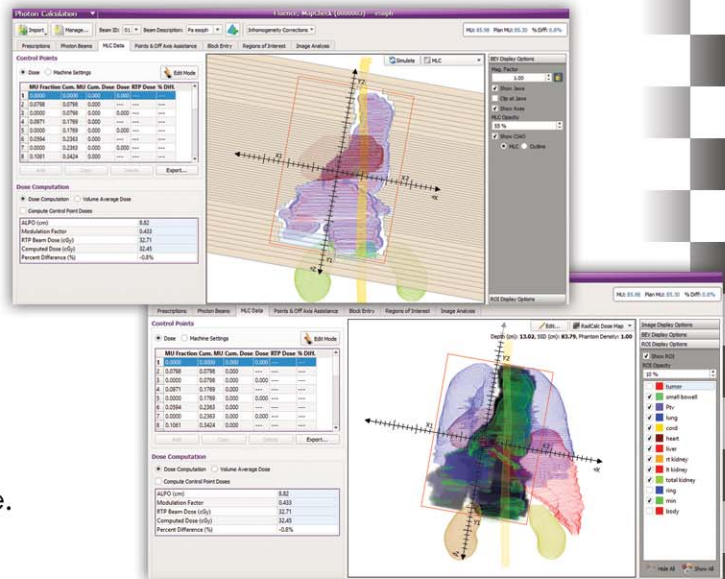
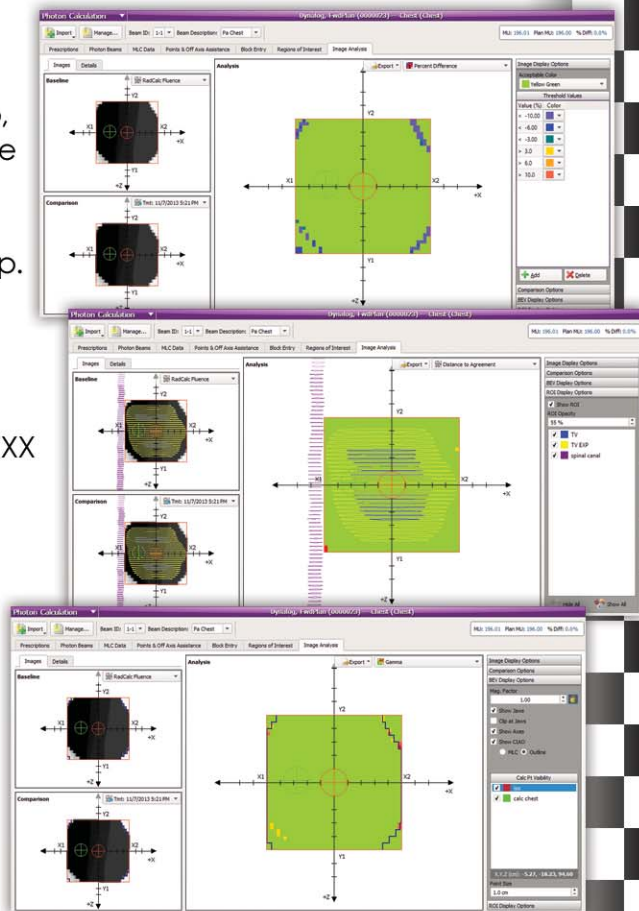
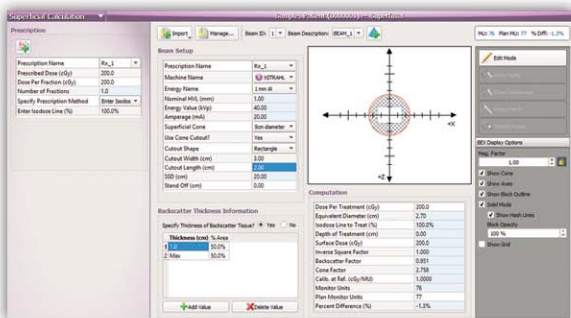
Automated Import and Reporting (AIR)



Improve your workflow with RadCalc® AIR: Automatically calculates your exported plans and creates reports that can be stored or e-mailed directly to you.

New Beams Eye View (BEV) options

- Adjust fluence and dose maps using Window & Level
- Overlay Regions of Interest (ROIs) within any BEV
- The visibility of each ROI may be set independently
- The opacity of the ROIs may be adjusted
- Overlay the CIAO as either an MLC or as an outline within any BEV
- The visibility of each calculation point may be set independently
- Easily export the raw image analysis results to a CSV file.



The FIRST to provide verification for Superficial calculations

Please refer to the Superficial Calculations leaflet for more detailed information.